

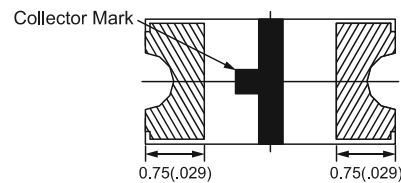
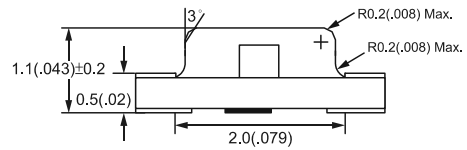
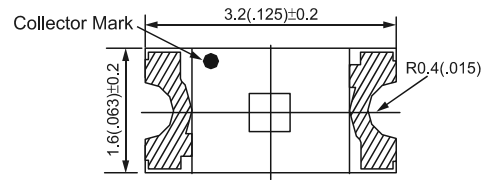
SURFACE MOUNT INFRARED EMITTING DIODES



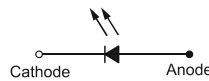
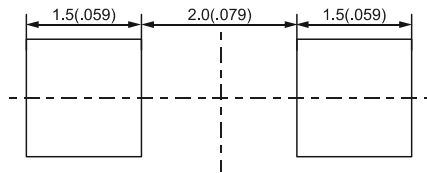
Absolute Maximum Ratings
(Ta=25°C)

	UNIT	SPEC.
IF	mA	20
IFp	mA	100
VR	V	5
Topr	°C	-40~+85
Tstg	°C	-40~+85

BIR-Hxx33 (1206) Series



For reflow soldering



- NOTE:
 1. All dimension are in millimeters(inches).
 2. Tolerance is ±0.10(.004") unless otherwise specified.
 3. Specifications are subject to change without notices.

Part No.	Chip			Lens Appearance	Electro-optical Data (At 20mA)					Viewing Angle 2 θ 1/2 (deg)
	Material	λp (nm)	Δλ (nm)		Vf (V)		Ir (μA)	Radiant Power Po (mw/sr)		
					Typ.	Max.		Min.	Typ.	
BIR-HM133	AlGaAs/GaAs	940	50	Water Clear	1.2	1.7	50	1.00	4.00	120°
BIR-HN133	AlGaAs/GaAs	880	50		1.4	2.0	50	0.71	1.20	
BIR-HO033	AlGaAs/GaAs	850	50		1.4	2.0	50	1.98	4.00	
BIR-HO133	AlGaAs/GaAs	850	50		1.4	2.0	50	1.41	3.00	